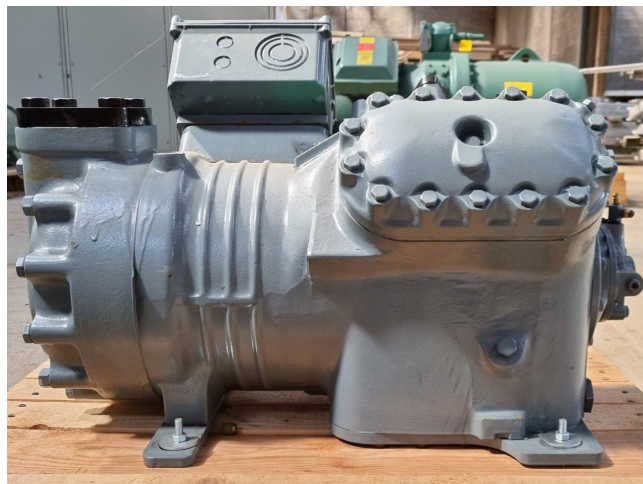


## DWM D4SH1-250X-AWM/D

### Specifications

Marka	DWM
Typ	D4SH1-250X-AWM/D
Czynnik chłodzący	Freon
kW at -5°C/+40°C	50,5
kW at -10°C/+40°C	41,7
kW at -20°C/+40°C	27,6
kW at -30°C/+40°C	17,2
Okno widokowe	✓
Uwagi	yob 2002
Rozmiary	670x550x460 mm (LxWxH)
Stock	1



### Description

#### Used DWM D4SH1-250X-AWM/D

Used D4SH1-250X-AWM/D semi-hermetic piston compressor. Equipped with sight glass.

\*Why choose for HOSBV? Were not only the largest used refrigeration specialist in Europe, but also, we deliver all equipment including an extensive test, warranty and industrial cleaning.

\*Optional we can also perform a new paint job and arrange the logistics.

